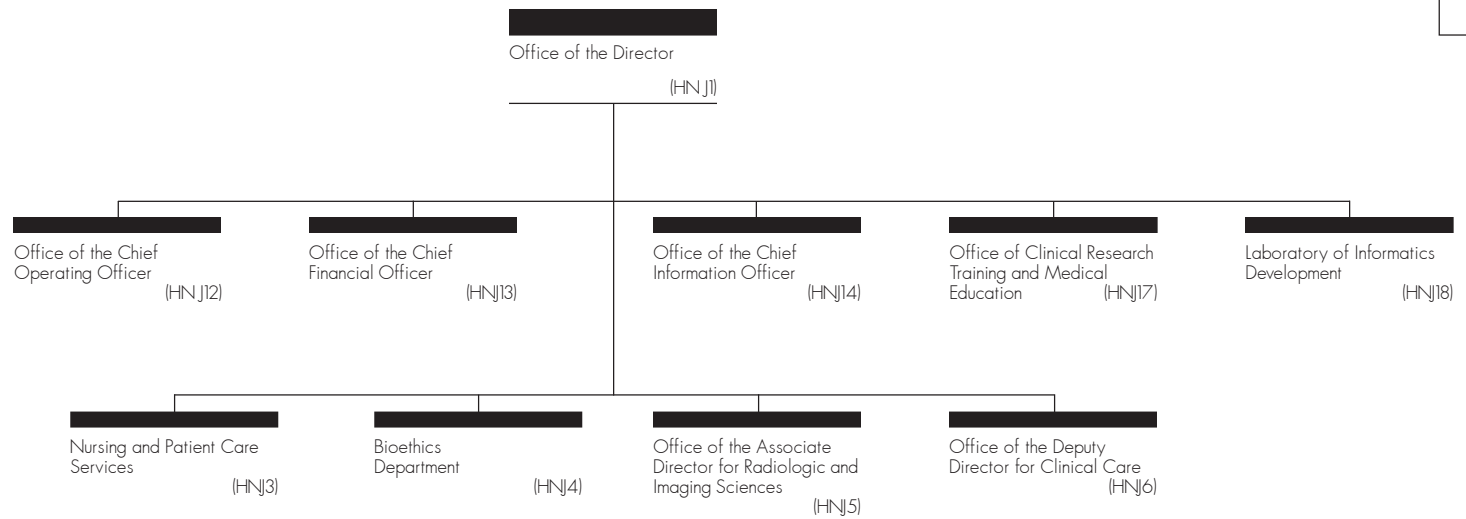
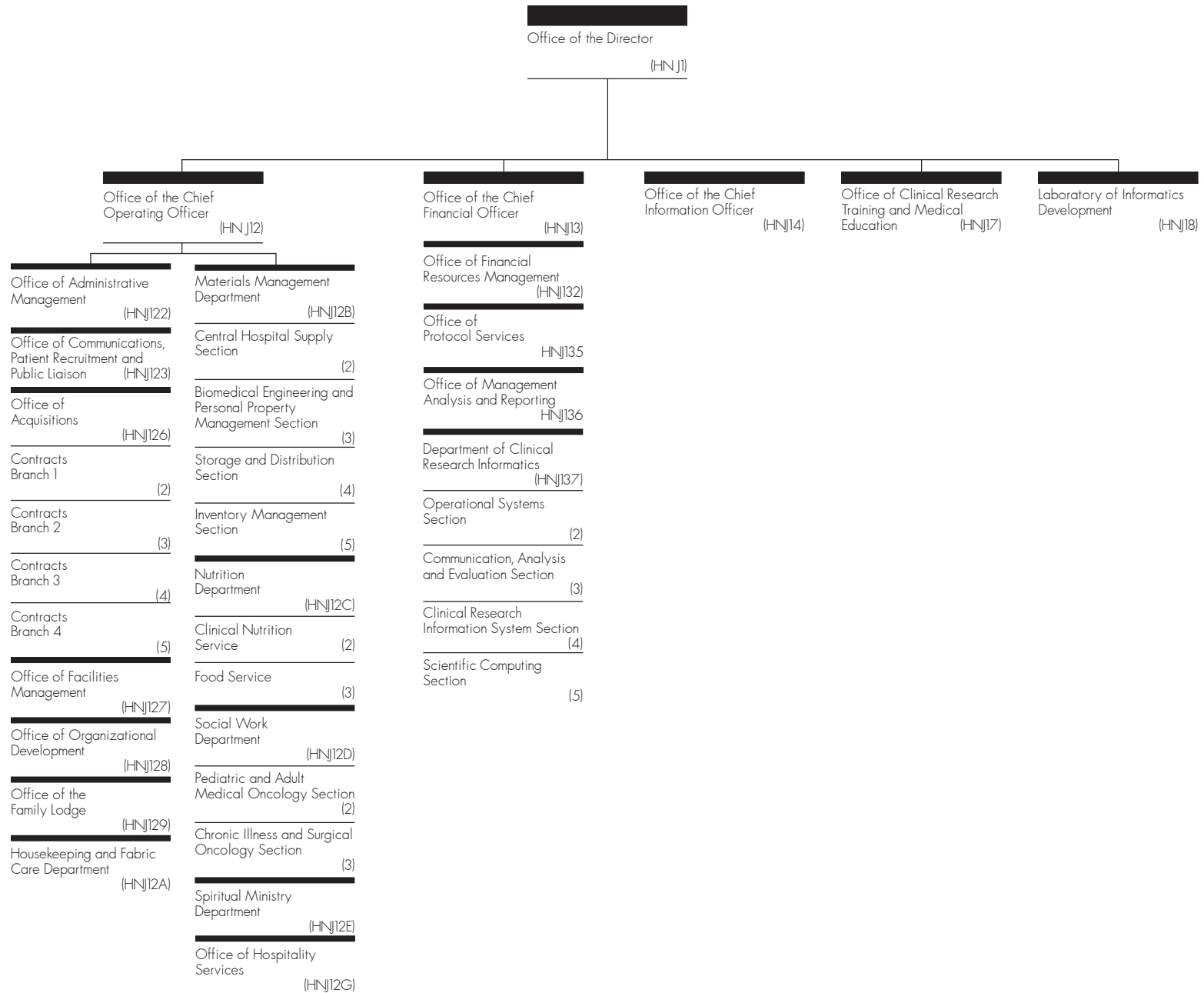


Clinical Center

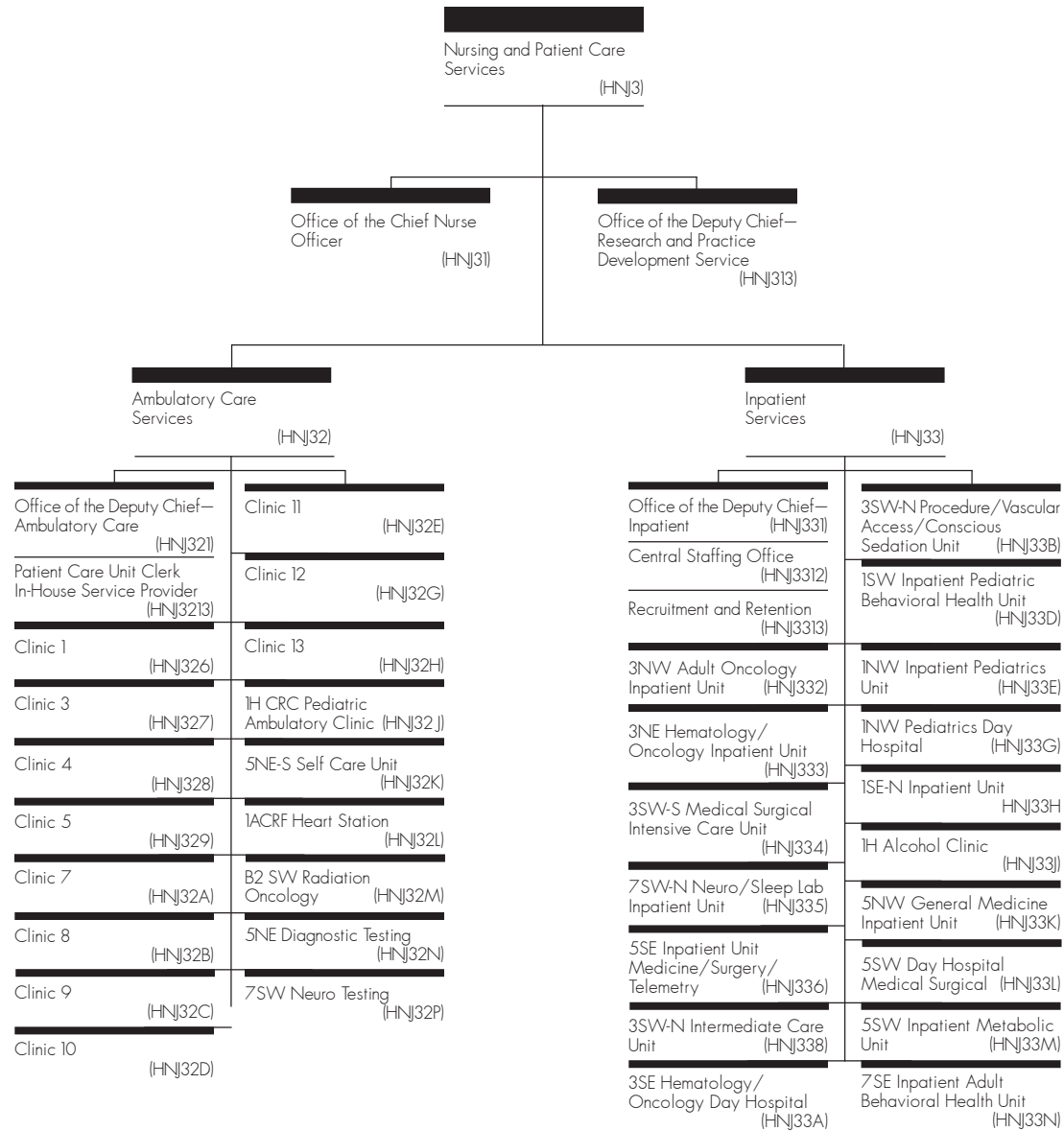


- Provides patient facilities and services, other than physician care, for clinical investigations in the Clinical Center;
- Conducts research in clinical care, hospital administration, and related areas; and
- Supervises residency and other training programs.

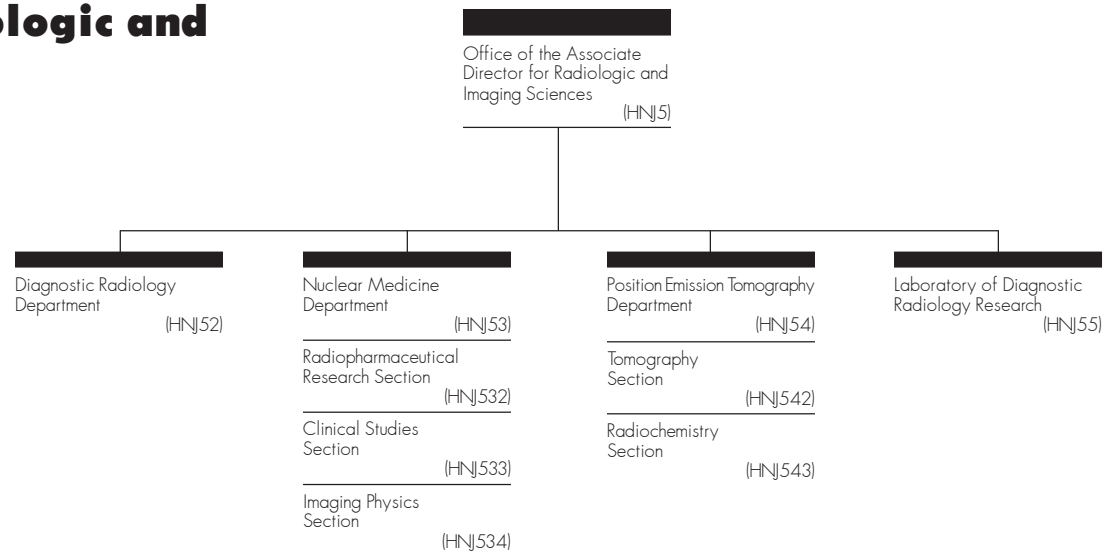
Office of the Director



Nursing and Patient Care Services



Office of the Associate Director for Radiologic and Imaging Sciences



Office of the Deputy Director for Clinical Care

